

## AF85 series

# 20/45/60 Fire-Rated Aluminum Doors & Frames

ALUFLAM® has pioneered the innovative solution to what was long considered an impossible dream (and a barrier to truly beautiful commercial architectural design), the development of rugged, versatile aluminum framing technology for fire-rated commercial curtain wall applications.

The ALUFLAM system has been tested and approved and is available to the architectural and construction communities worldwide.



### Features:

- The clean, sharp lines of narrow stile aluminum framing
- Large, wire-free glass areas
- Temperature rise performance through insulated frame and glazing
- Increased design freedom
- Tested and approved to national and international fire codes
- Multitude of finish options
- Top of the line hardware options - conforming to North American standards
- Simple to install
- High impact resistance
- No corrosion
- Energy efficient
- Reduced noise transmission
- Available in single leaf or double design
- Interior and exterior installation
- Special hardware solutions available
- 20/45/60 min. ratings
- Manufactured in USA

### Framing:

The revolutionary all-aluminum framing system is based on high quality extruded profiles, filled with a proprietary insulating compound.

### Glazing:

Aluflam doors incorporate clear fire protective rated glazing. Glazing conforms to CPSC 16CFR1201 (CAT I & II) standards for impact while providing excellent clarity and sound reduction. Aluflam's 45 and 60 minute doors feature clear intumescent glazing for temperature rise classification.

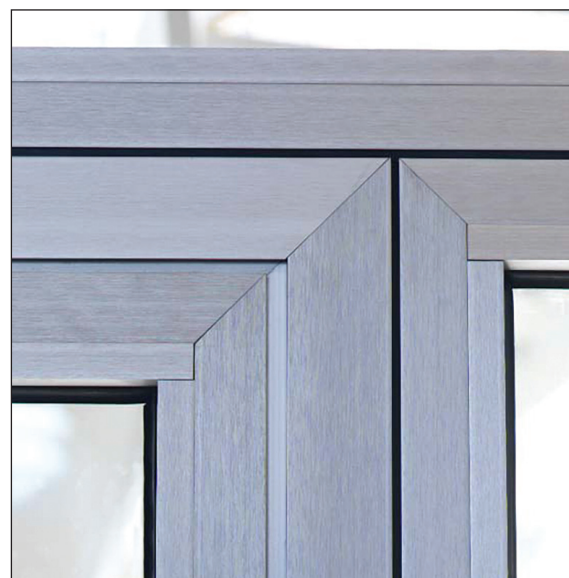
### Listings:

These door assemblies are Listed by Underwriters Laboratories Inc. to UL10C and UBC 7-2 (1997) standards. UL File Number R21720. City of New York approved - MEA 171-07-M. Tested to UL 1784 and conforms to NFPA 105 requirements for smoke doors.

### Documentation:

Go to [www.aluflam-usa.com/resources/](http://www.aluflam-usa.com/resources/) for:

- CAD drawings
- CSI specifications
- Installation instructions
- UL approvals



See our website for our full range of design options: [www.aluflam-usa.com](http://www.aluflam-usa.com)

Contact: Aluflam North America – A complete list of approved Aluflam representatives is available online at [www.aluflam-usa.com](http://www.aluflam-usa.com)  
E-mail: [info@aluflam-usa.com](mailto:info@aluflam-usa.com)



ALUFLAM NORTH AMERICA  
16604 Edwards Road, Cerritos, CA 90703  
Phone: 562.926.9520 Fax: 562.404.1394 [www.aluflam-usa.com](http://www.aluflam-usa.com)

Copyright © 2017 Aluflam North America

**aluflam**  
Fire-Rated Aluminum Window And Door Systems

**aluflam**  
Fire-Rated Aluminum Window And Door Systems

Description	Single Door	Double Door (2 Active Leaves)	Double Door (1 Active Leaf)
Designation	SD	DD-AA	DD-AF
Fire rating	20/45/60	20/45/60	20/45/60
Maximum door size (in)	36 x 96/42 x 90	72 x 96	72 x 96
Maximum rough opening (in)	42 x 99/48 x 93	78 x 99	78 x 99

Looking for custom solutions?  
Aluflam can provide a variety of custom solutions - both on framing and glass. Contact us for details!

### Standard Hardware

Description	Single Door / SD	Description	Double Door / DD-AF
Closer	Dorma TS93 series	Closer/coordinator	Dorma TS93 series
Offset hinges	Dr Hahn	Offset hinges	Dr Hahn
Mortise lock	Accurate 8600	Mortise lock	Accurate 8600
Trim	FSB	Trim	FSB
		Flush bolt	BKS B1899/1895

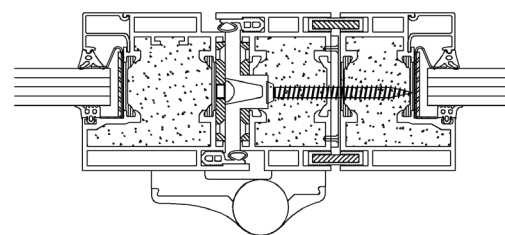
Description	Double Door / DD-AA
Closer	Dorma TS93 series
Offset hinges	Dr Hahn
Vertical rod exits	Dorma LB-F9800 series

**Hardware Options**  
In addition to the standard hardware, Aluflam can offer options such as 10" kickplates, rim exit devices, thresholds, electric hardware, wiring, floor closers, etc. Please inquire with an Aluflam sales person for optional hardware brands, configurations and solutions for your project.

### Sidelights / Transoms

The Aluflam fire-rated door frames integrate perfectly with the fire-rated storefront framing system

- Fixed transoms
- Fixed sidelights
- Door/wall integration



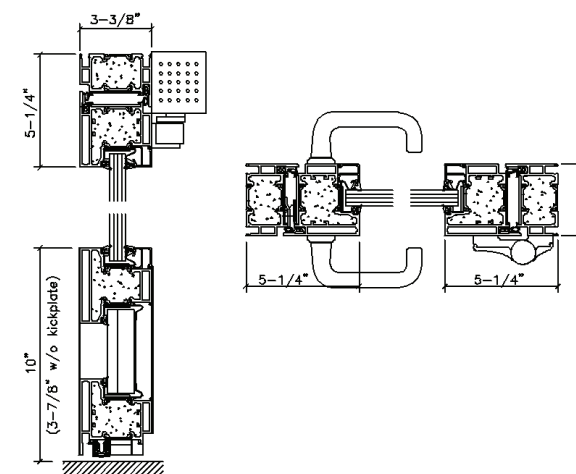
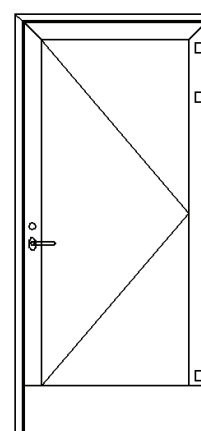
### Finishes

Aluflam can offer a number of factory pre-finished coatings for its fire-rated aluminum products. These include:

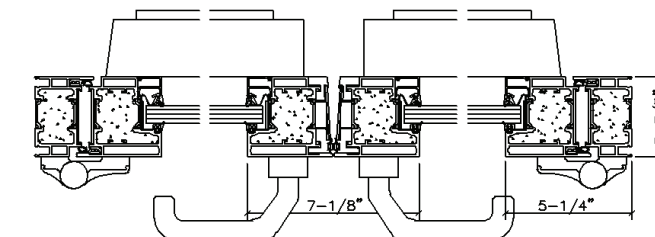
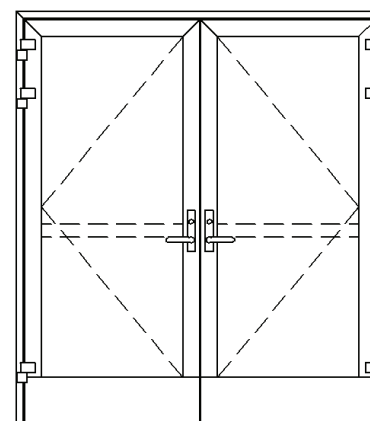
- Anodizing
- Epoxy powder coats
- Architectural paint finishes

### Single Door SD

SD



### Double Door - Active / Active DD-AA



### Double Door - Active / Fixed DD-AF

